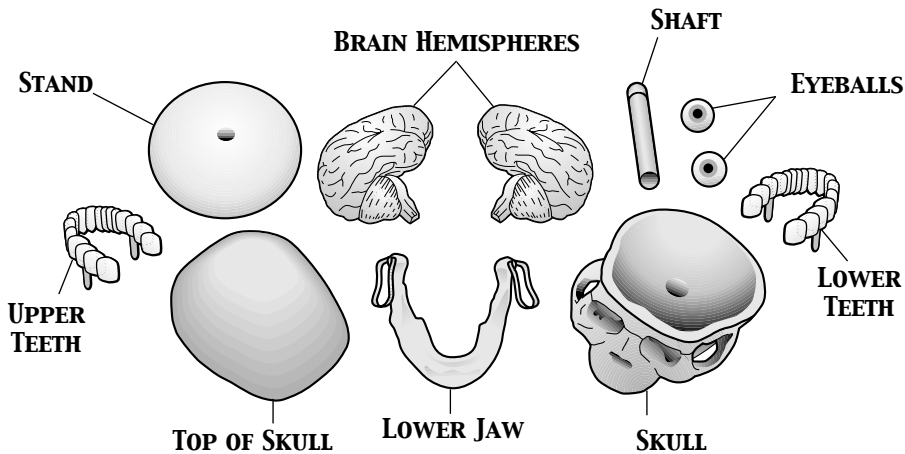
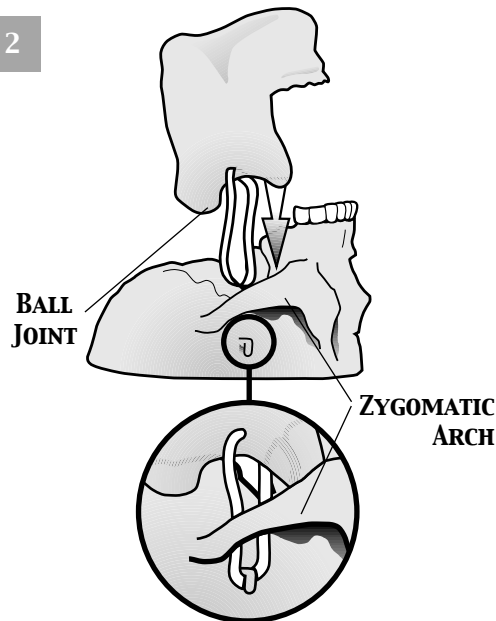
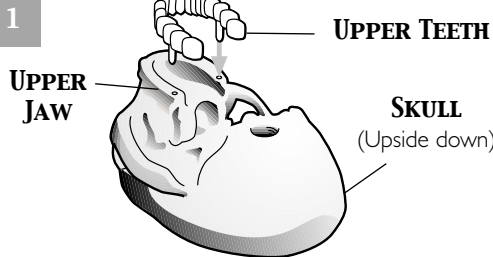


# AMAZING SKULL ASSEMBLY INSTRUCTIONS



If you have questions or comments about this product, send an email to [infobm@beckermayer.com](mailto:infobm@beckermayer.com).



- ❖ Compare the pieces that came with your kit to the pieces in this labeled illustration.

- ❖ Now, follow these steps to assemble your Amazing Skull model.

## 1. POP IN THE UPPER TEETH

- ❖ The upper teeth are marked with a "U."

- ❖ Insert the upper teeth pegs into the holes in the upper jaw.

## 2. MOUNT THE LOWER JAW

- ❖ Find the lower jaw and hold it upside down.

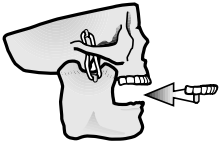
- ❖ Fit the ball joints on the lower jaw into the sockets on the base of the skull.

- ❖ The rubber band that is attached to the lower jaw should hang into the zygomatic arch.

- ❖ Pull the rubber band through the zygomatic arch and loop it over the hook on the skull.

- ❖ Repeat the process on the other side of the skull using the other rubber band.

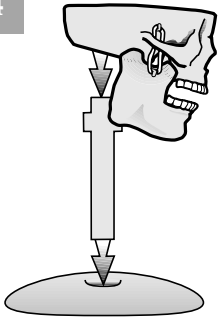
3



### 3. INSERT THE LOWER TEETH

- ❖ Turn the skull over.
- ❖ Holding the skull in your hand, gently open the mouth and insert the lower teeth pegs into the holes in the lower jaw. (Be careful! Don't let your fingers get caught between the teeth.)

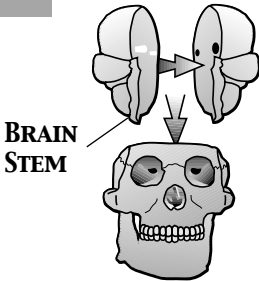
4



### 4. MOUNT THE SKULL ON THE STAND

- ❖ One end of the shaft has a collar or ring on it.
- ❖ Insert the end with the collar into the hole in the base of the skull.
- ❖ Insert the other end of the shaft into the hole in the stand.

5



### 5. ASSEMBLE THE BRAIN

- ❖ Insert the pegs on one hemisphere of the brain into the holes on the other.
- ❖ Place the brain into the lower skull. The brainstem—that little “tail” pointing down—fits through the hole in the base of the skull.

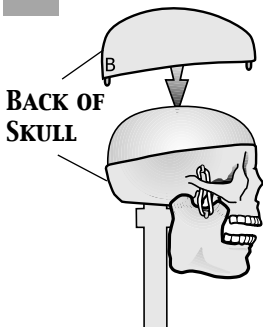
### 6. CLOSE UP THE SKULL

- ❖ The top of the skull has two pegs. One peg is marked with a “B.” (“B” is for back.)
- ❖ Fit the peg marked “B” into the hole on the back of the lower skull. The other peg fits into the hole on the front of the skull.

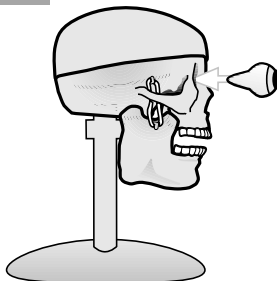
### 7. POP IN THE EYES

- ❖ Notice that the eyeballs have tapered ends.
- ❖ Push the tapered end of one eyeball into one of the sockets. Press gently until the end fits into the hole at the back of the socket. (The eyes are the same, so either eyeball can be inserted into either socket.)
- ❖ Do the same with the other eye.

6



7



FINISHED!

